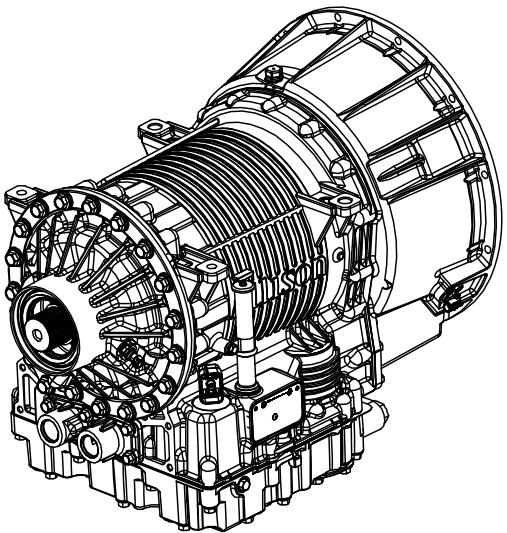
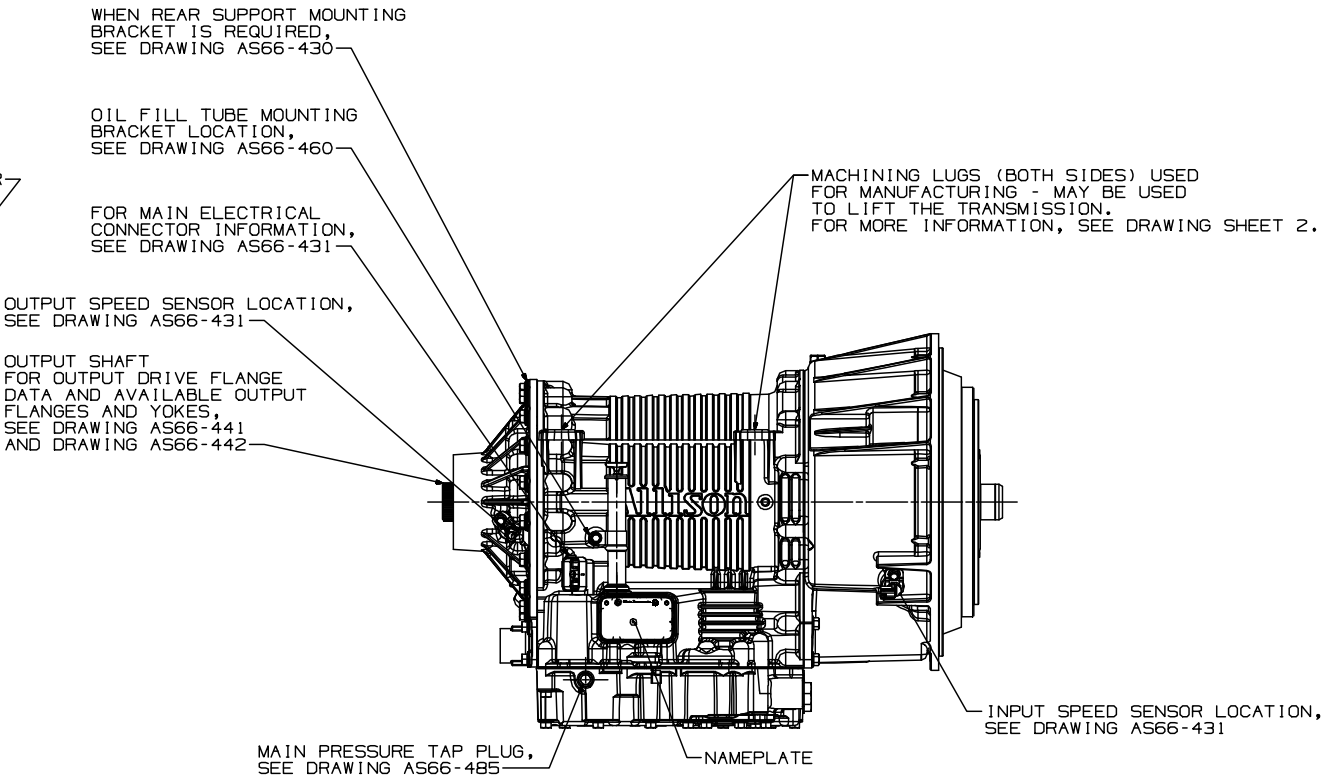
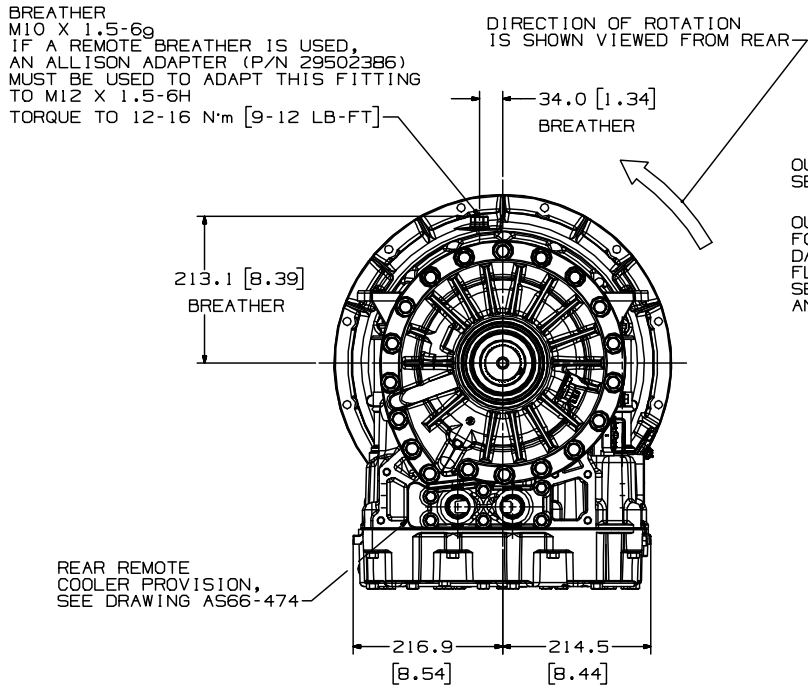


REMOVAL AND INSTALLATION CLEARANCE			
PART/ASSEMBLY	DIMENSION	DIRECTION*	DESCRIPTION
TRANSMISSION	110.0 (4.33)	HORIZONTAL	DISTANCE REQUIRED TO REMOVE TRANSMISSION
FILTERS - DEEP SUMP	211.0 (8.31)	VERTICAL	CLEARANCE REQUIRED BELOW CONTROL MODULE FOR FILTER AND COVER REMOVAL
FILTERS - SWALLOW SUMP	167.0 (6.57)	VERTICAL	CLEARANCE REQUIRED BELOW CONTROL MODULE FOR FILTER AND COVER REMOVAL
MAIN PRESSURE TAPS	38.0 (1.50)	PERPENDICULAR	CLEARANCE REQUIRED FROM CONTROL MODULE FOR PLUG REMOVAL
DRAIN PLUG	24.8 (.98)	VERTICAL	CLEARANCE REQUIRED BELOW CONTROL MODULE FOR PLUG REMOVAL
SPEED SENSOR CONNECTOR	SEE DRAWING AS66-431		CLEARANCE REQUIRED TO REMOVE WIRING HARNESS FROM SPEED SENSOR
* TRANSMISSION VIEWED FROM THE SIDE			



ISOMETRIC VIEW



TORQUES SHOWN ARE FOR PLAIN (NON-PLATED)  
FASTENERS AND OTHER THREADED COMPONENTS  
SUPPLIED AND INSTALLED BY THE VEHICLE  
BUILDER. TORQUE REQUIREMENTS SHOULD BE  
REVIEWED IF PLATED FASTENERS WILL BE USED.  
CONSULT THE SUPPLIER.

FOR TRANSMISSION DATA NOT SHOWN,  
SEE 3000 PRODUCT FAMILY TRANSMISSION DATA SECTION.

FOR WIRING HARNESS INFORMATION  
REFER TO TECHNICAL DOCUMENT 173 (TD 173)

FOR CONTROLS INFORMATION REFER TO  
ALLISON CONTROLS TECH DATA.

FOR RETARDER OPTION, SEE DRAWING AS66-418.

NON-PTO CONFIGURATION SHOWN,  
FOR ADDITIONAL PTO OPTION INFORMATION,  
SEE DRAWING AS66-485.

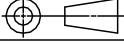
DIMENSIONS SHOWN IN PARENTHESES ARE  
IN INCHES, AND FOR REFERENCE ONLY



FR2

METRIC

THIRD ANGLE



THE INFORMATION CONTAINED HEREIN IS PROPRIETARY AND THE  
PROPERTY OF ALLISON TRANSMISSION, INC. AND MAY NOT BE  
REPRODUCED, DISCLOSED OR USED FOR ANY PURPOSE OTHER THAN A  
QUOTATION TO OR ON ORDER FROM ALLISON TRANSMISSION, INC.  
WITHOUT THE SPECIFIC WRITTEN AUTHORIZATION OF  
ALLISON TRANSMISSION, INC.

FR1

DWG. NO.

AS66-416

LTR SH

B 1

B	(1)UPDATED TO LATEST HARDWARE (2)SEE SHEET 2	07FE19 RH-JC
A	(1)UPDATED TO LATEST BREATHER HARDWARE (2)213.1 (8.39) WAS 213.3 (8.48) BREATHER DIM.	08MY17 RH-JH

REVISIONS		DATE	BY
REV	DESCRIPTION	DATE	BY
1	DRAWN R. HIGGINS DATE 05NOV14 CHECKED J. HALEY DATE 11OCT16 APPROVED DATE PROJ. ENGR. J. HALEY DATE 11OCT16 APPL. ENGR. T. BROWN DATE 11OCT16		
INSTL DWG, BASIC 6-SPEED			
MODEL 3000 PRODUCT FAMILY			
SIZE	CAGE CODE	DWG NO	
R	73342	AS66-416	
SCALE NONE			
CURRENT STATUS:			
RX-Released - EXP			

AS66-416

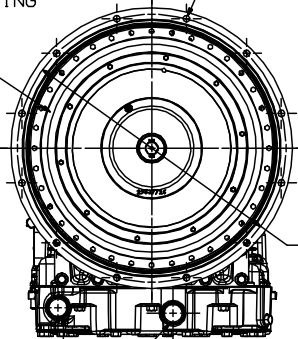
TRANSMISSION CONFIGURATION	DIMENSION <b>A</b>	DIMENSION <b>B</b>	DIMENSION <b>C</b>	DIMENSION <b>D</b>	DIMENSION <b>E</b>	DIMENSION <b>F</b>	DIMENSION <b>G</b>	DIMENSION <b>H</b>	DIMENSION <b>J</b>	DIMENSION <b>K</b>
NO PTO	718.7 [28.30]	702.7 [27.87]	606.5 [23.88]	189.1 [7.44]	634.7 [24.98]	543.4 [21.39]	303.8 [11.96]	175.4 [6.91]	266.3 [10.49]	546.3 [21.51]
WITH PTO	825.4 [32.50]	809.4 [31.87]	713.2 [28.08]	295.8 [11.65]	741.4 [29.19]	650.1 [25.59]	410.5 [16.16]	282.1 [11.11]	373.0 [14.69]	653.0 [24.71]

FOR ADDITIONAL PTO OPTION INFORMATION REFER TO AS66-485.

NON-PTO AND SIDE-SIDE PTO  
CONVERTER HOUSINGS  
Ø 11.65-12.15 BOLT HEAD SIDE  
[0.459-0.478]  
12 HOLES EQUALLY SPACED

TOP-SIDE PTO CONVERTER HOUSINGS  
Ø 10.80-11.30 THRU  
[0.425-0.445]  
12 HOLES EQUALLY SPACED

SOCIETY OF AUTOMOTIVE ENGINEERS  
NUMBER 2 FLYWHEEL HOUSING  
MOUNTING FACE



Ø 466.72  
[18.375]  
BOLT CIRCLE REFERENCE

FRONT REMOTE COOLER PROVISION,  
SEE DRAWING AS66-474  
AVAILABLE ONLY ON DEEP (4") SUMP

MACHINING LUGS (BOTH SIDES) USED  
FOR MANUFACTURING - MAY BE USED  
TO LIFT THE TRANSMISSION.

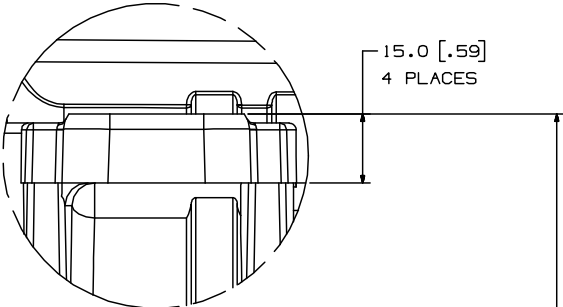
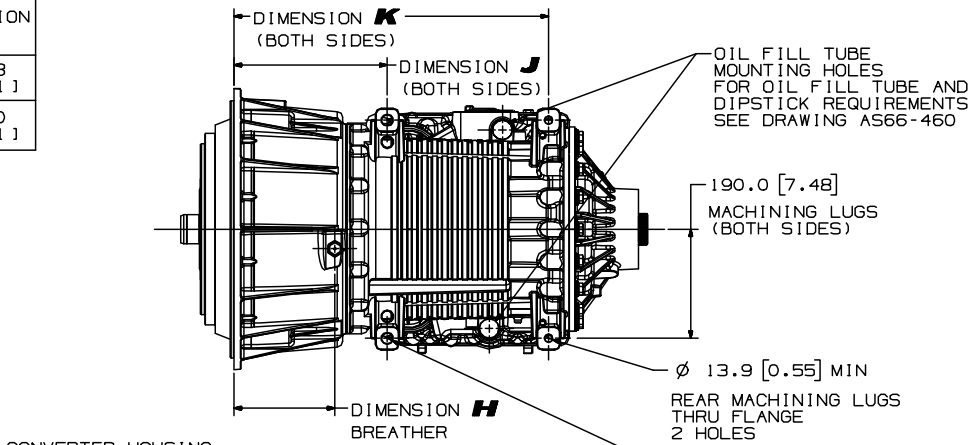
THESE LUGS WERE NOT DESIGNED TO  
PROVIDE STRUCTURAL SUPPORT FOR  
ANCILLARY EQUIPMENT. IF USED FOR THAT  
PURPOSE, STRICT REQUIREMENTS MUST BE MET.  
REFER TO "TRANSMISSION MOUNTING - GENERAL  
REQUIREMENTS" FOR FURTHER DETAILS.

EXTERNAL M10 X 35 LONG CONVERTER HOUSING-TO-MAIN CASE BOLT [8 PLACES]  
MAY BE REMOVED AND REINSTALLED FOR ATTACHMENT OF BRACKET WITH MAXIMUM  
THICKNESS OF 2.1 [0.08].

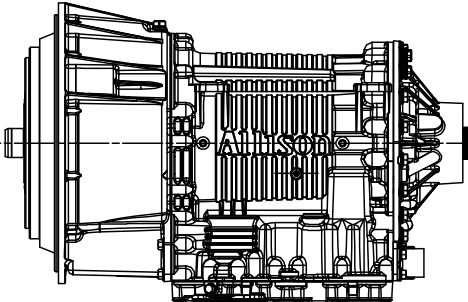
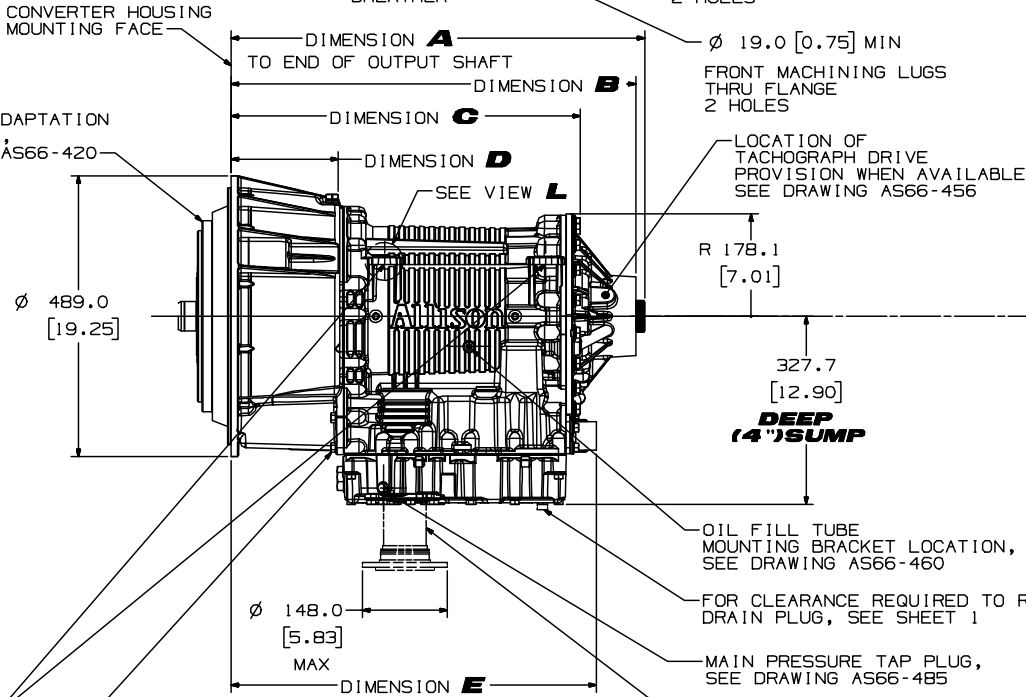
FOR BRACKETS WITH THICKNESS GREATER THAN 2.1 mm [0.08 IN.], A 40 mm [1.61IN.]  
BOLT MUST BE USED TO MAINTAIN ADEQUATE THREAD ENGAGEMENT. A WASHER MAY  
BE REQUIRED TO PREVENT BOTTOMING OUT OF BOLT IN THE TAPPED HOLE.  
BRACKET AND WASHER MUST HAVE COMBINED THICKNESS OF 5.0-6.0 mm [0.20-0.24 IN.]

MAXIMUM OF TWO PER TRANSMISSION.

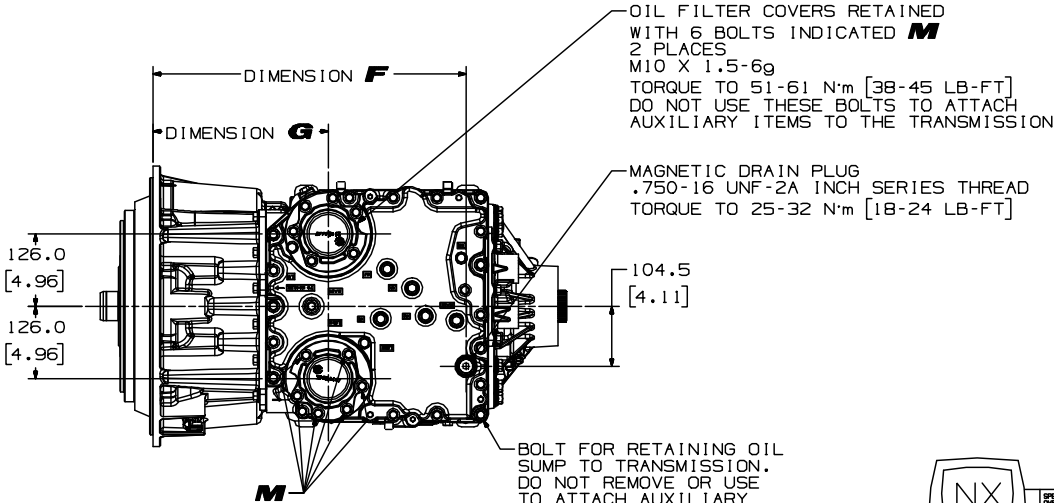
ALL BOLTS MUST BE RE-TORQUED TO 61-72 N·m [45-53 LB-FT].



VIEW **L**  
SCALE 2/1



**SHALLOW (2") SUMP OPTION**



BOLT FOR RETAINING OIL  
SUMP TO TRANSMISSION.  
DO NOT REMOVE OR USE  
TO ATTACH AUXILIARY  
EQUIPMENT TO TRANSMISSION.  
20 PLACES AROUND  
PERIPHERY OF SUMP.

DIMENSIONS SHOWN IN PARENTHESES ARE  
IN INCHES, AND FOR REFERENCE ONLY

FR1 DWG. NO.  
AS66-416

NX

FR2  
SPECIFIED DIMENSIONS HAVE PRECEDENCE  
OVER COMPUTER GENERATED DATA  
CHANGE RESTRICTED

METRIC

THIRD ANGLE

THE INFORMATION CONTAINED HEREIN IS PROPRIETARY AND THE  
PROPERTY OF ALLISON TRANSMISSION, INC. AND MAY NOT BE  
REPRODUCED, DISCLOSED OR USED FOR ANY PURPOSE OTHER THAN A  
QUOTATION TO OR ON ORDER FROM ALLISON TRANSMISSION, INC.  
WITHOUT THE SPECIFIC WRITTEN AUTHORIZATION OF  
ALLISON TRANSMISSION, INC.

B (2) REVISED "NON-PTO AND SIDE-SIDE PTO..." CALLOUT  
"Ø 11.65-12.15 THRU" WAS "Ø 11.60-12.00 THRU"  
AND REMOVED "CAST THRU HOLES WITH DRAFT"

REV DESCRIPTION REVISIONS  
DATE 11FE19/11FE19  
DATE 11FE19/11FE19

ALLISON Transmission  
Indianapolis, Indiana, USA  
INSTL DWG, BASIC 6-SPEED

MODEL 3000 PRODUCT FAMILY  
SIZE CAGE CODE DWG NO  
R 73342 AS66-416  
SCALE NONE SHEET 2

CURRENT STATUS:  
RX-Released - EXP

AS66-416